

WebEd Navigation Instructions

General Information:

At the top of the window is a constellation of stars. Each star represents a shining indicator of systems thinking. Collectively we refer to these indicators as the Habits of a Systems Thinker.



Move your cursor to the "dark sky" section at the top of the window to display the names of all 13 Habits of a Systems Thinker.



Hover over a star to read a brief description of that habit. Click on one of these habits, and another window will open with more information on that habit. The Habits of a Systems Thinker are embedded throughout the content of the WebEd modules, with each of the modules including one or more of them. You can access these habits through the constellation of stars at any time while using WebEd.

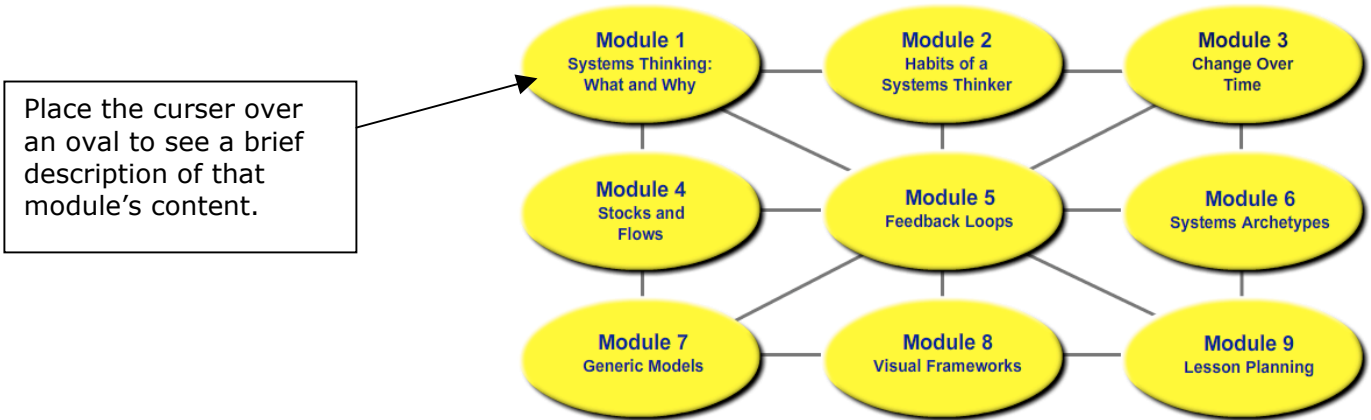


Once you've opened a particular habit, the "Habits" menu allows you to choose another habit.

The "Close This Window" menu takes you back to the main WebEd screen.

Modules:

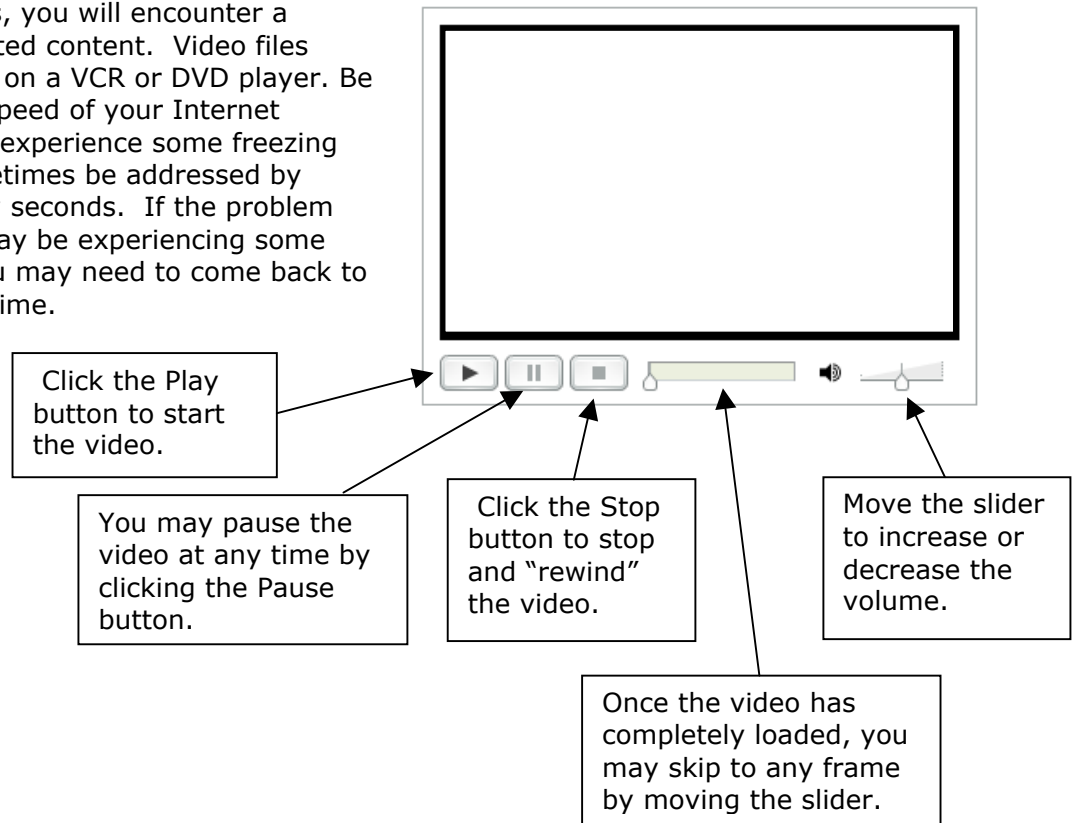
In the center of the screen are ovals representing the nine learning modules of WebEd. The modules are numbered in a recommended sequence for those new to systems thinking concepts and strategies, but feel free to explore the modules based on your interest and experience.



Once you select a module, different menu options will appear, depending on the content of that module. For example, Module One has a menu item called, "Systems Thinking: What and Why" that contains the six sections of that module. Again, the sections of modules are numbered in a recommended sequence with sections sometimes containing multiple parts.

Video:

Within each of the modules, you will encounter a variety of video and animated content. Video files have icons similar to those on a VCR or DVD player. Be aware that, based on the speed of your Internet connection, the video may experience some freezing or jerkiness. This can sometimes be addressed by pausing the video for a few seconds. If the problem continues, your network may be experiencing some difficulty, in which case you may need to come back to view the video at another time.

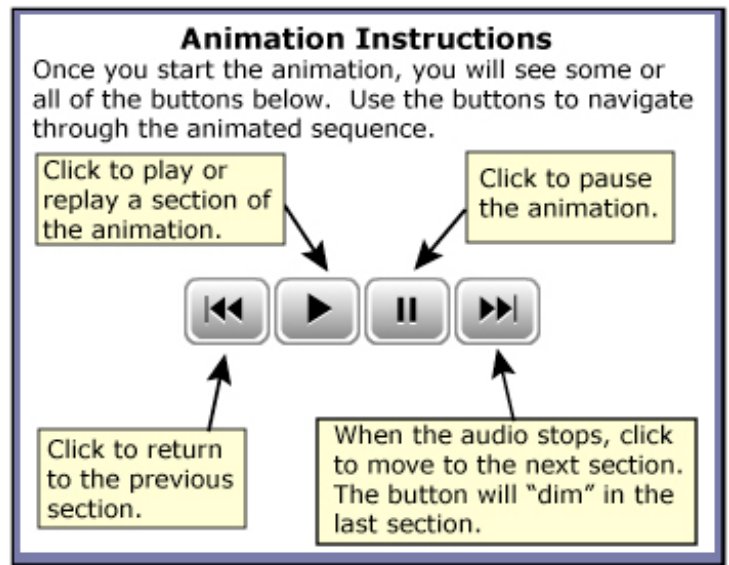


Animated Content:

Audio-visual content also has icons similar to those on a VCR or DVD player.



Wait for the green loading bar to disappear, and then click the Start button to begin the animated presentation.



Troubleshooting:

If you experience technical problems, please check the system requirements in the "Using WebEd" section. If you have questions or comments as you move through the modules, please send us an email using the link on the main screen.